

Great North Road Solar and Biodiversity Park

Water Bodies in a River Basin Management Plan

Document reference – EN010162/APP/2.6A

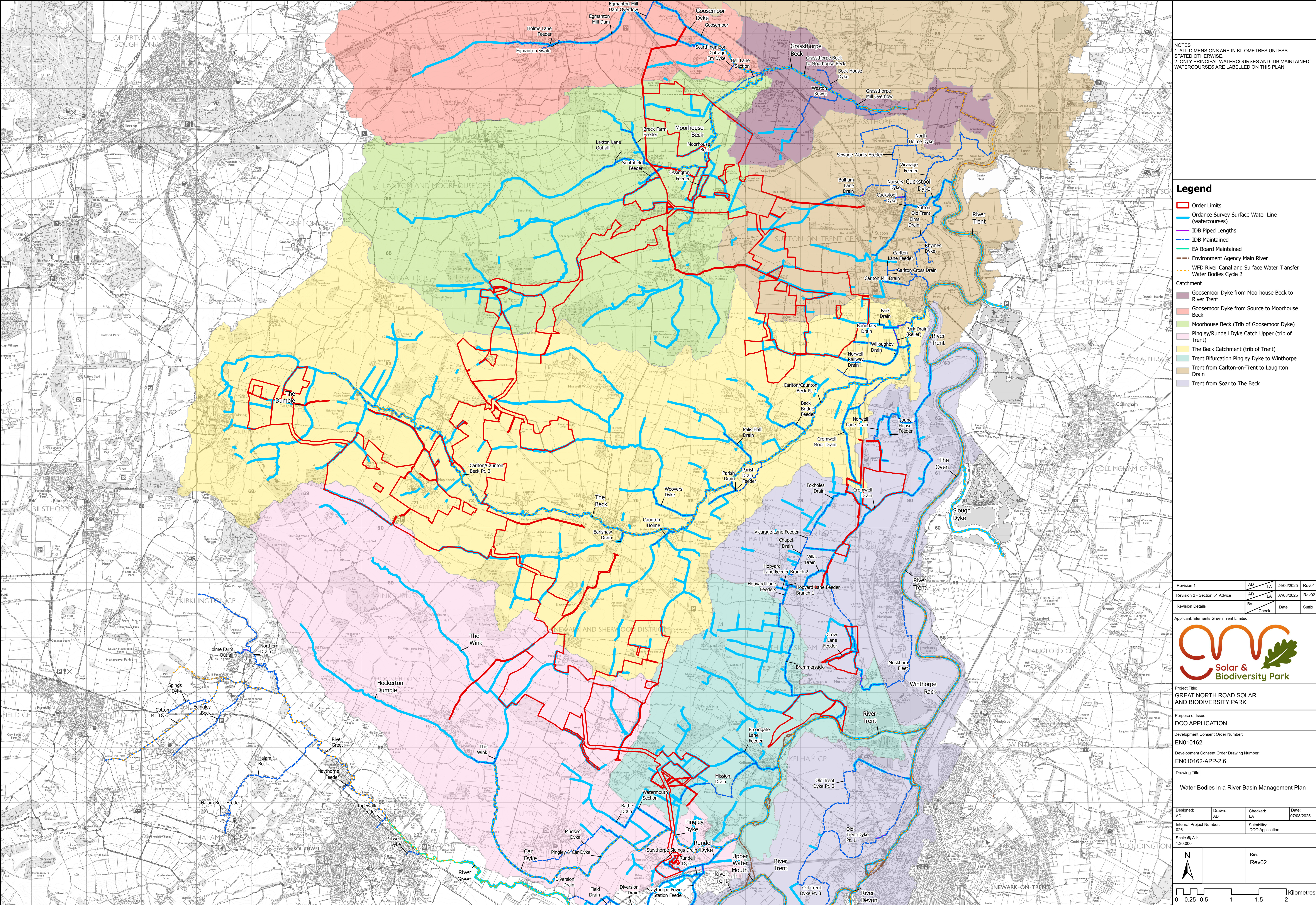
Revision number 2

August 2025

Infrastructure Planning (Applications: Prescribed Forms and Procedure) Regulations 2009, APFP Regulation 5(2)(i)(i)

2.6 WATER BODIES IN A RIVER BASIN MANAGEMENT PLAN

<i>Drawing Number</i>	<i>Revision</i>	<i>Drawing Title</i>	<i>Scale</i>	<i>Reason for Revision</i>
EN010162-APP-2.6	02	Water Bodies in a River Basin Management Plan	1:30,000 @ A1	Updated to identify principal and IDB maintained watercourses. Improved symbology and labelling for watercourses.



NOTES
1. ALL DIMENSIONS ARE IN KILOMETRES UNLESS STATED OTHERWISE
2. ONLY PRINCIPAL WATERCOURSES AND IDB MAINTAINED WATERCOURSES ARE LABELLED ON THIS PLAN

Legend

- Order Limits
- Ordnance Survey Surface Water Line (watercourses)
- IDB Piped Lengths
- IDB Maintained
- EA Board Maintained
- Environment Agency Main River
- WFD River Canal and Surface Water Transfer Water Bodies Cycle 2
- Catchment
 - Goosemoor Dyke from Moorhouse Beck to River Trent
 - Goosemoor Dyke from Source to Moorhouse Beck
 - Moorhouse Beck (Trib of Goosemoor Dyke)
 - Pingley/Rundell Dyke Catch Upper (trib of Trent)
 - The Beck Catchment (trib of Trent)
 - Trent Bifurcation Pingley Dyke to Winthorpe
 - Trent from Carlton-on-Trent to Laughton Drain
 - Trent from Soar to The Beck

Revision 1	AD	LA	24/06/2025	Rev01
Revision 2 - Section 51 Advice	AD	LA	07/08/2025	Rev02

Revision Details

Applicant: Elements Green Trent Limited



Project Title:
GREAT NORTH ROAD SOLAR
AND BIODIVERSITY PARK

Purpose of Issue:
DCO APPLICATION

Development Consent Order Number:
EN010162

Development Consent Order Drawing Number:
EN010162-APP-2.6

Drawing Title:
Water Bodies in a River Basin Management Plan

Designed: AD	Drawn: AD	Checked: LA	Date: 07/08/2025
Internal Project Number: 026		Suitability: DCO Application	

Scale @ A1:
1:30,000

Rev: Rev02

